

7127 Ambassador Road

Rutherford Business Park | Woodlawn, MD



Address: 7127 Ambassador Road
Woodlawn, MD

Building Size: 11,628 SF

Available SF: Suite 150: 6,365 RSF

Rental Rate: \$20.25/SF

Parking Ratio: 4.7/1,000 SF; Free & Unreserved

Location & Amenities:

- SSA & CMMS Headquarters less than 1 mile away
- Convenient to Routes I-695, I-95, I-795, I-70, US Route 40 & I-83
- Complete range of business services available nearby including restaurants, daycare, mall and banks

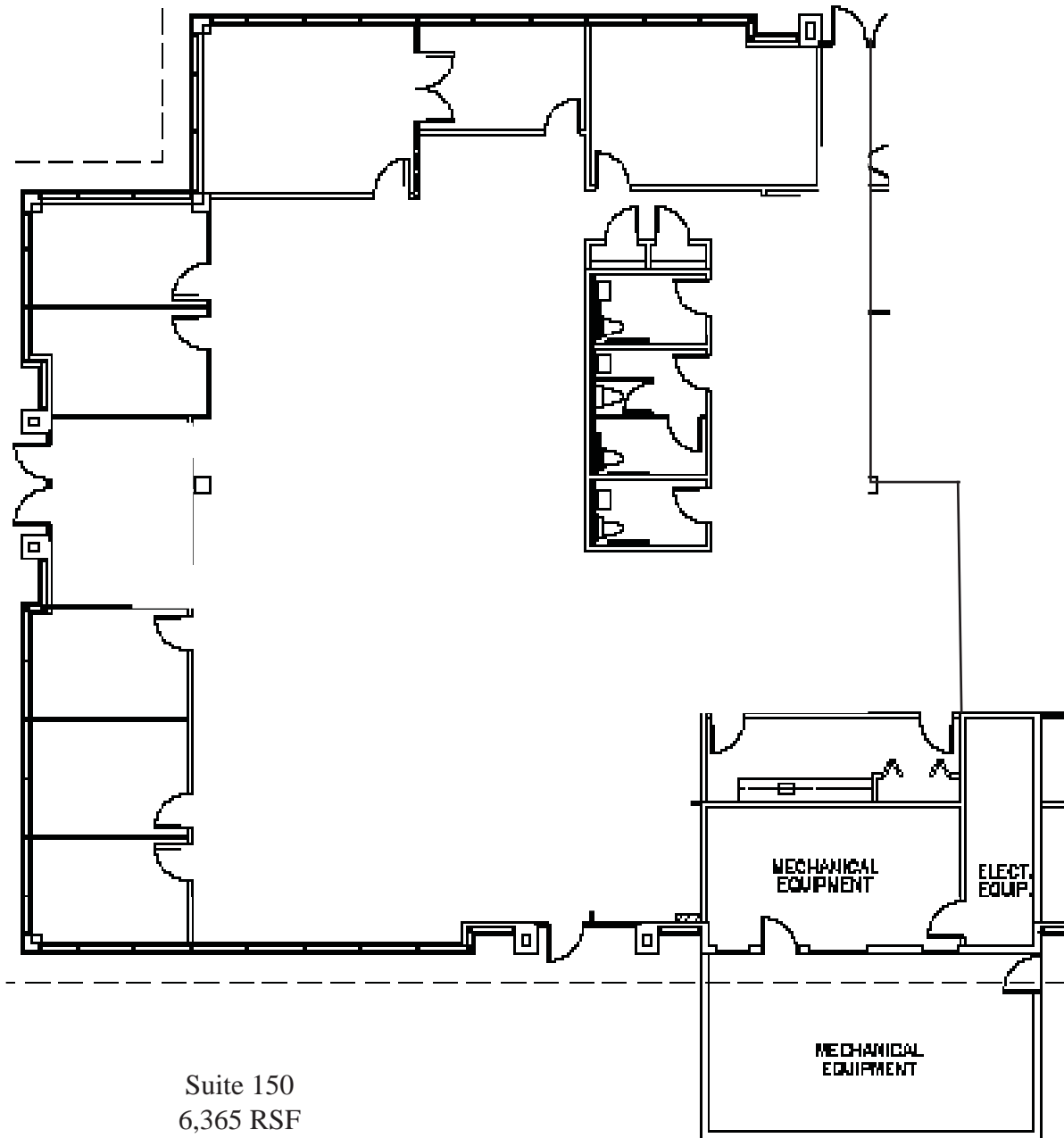
Telecom: Verizon & Comcast



FOR MORE INFORMATION CONTACT Alan Grabush | Principal | T 443.725.9000 x122 | chrisf@thecsgroup.com

7127 Ambassador Road

Rutherford Business Park | Woodlawn, MD



Suite 150
6,365 RSF

FOR MORE INFORMATION CONTACT Alan Grabush | Principal | T 443.725.9000 x122 | chrisf@thecsgroup.com